

Dubai Aerospace Enterprise (DAE) Ltd.

Trading and Distribution United Arab Emirates

ESG Risk Rating

12.5

Last Full Update Nov 24, 2023

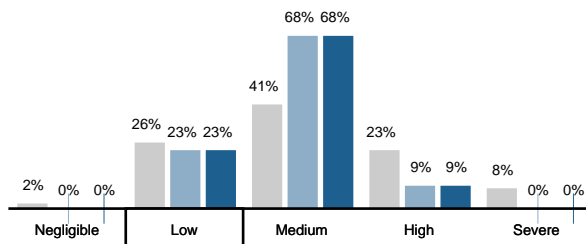
-1.9

Momentum

Low Risk



ESG Risk Rating Distribution



ESG Risk Rating Ranking

UNIVERSE	RANK	PERCENTILE
	(1 st = lowest risk)	(1 st = Top Score)
Global Universe	812/15798	6th
Traders & Distributors INDUSTRY	3/204	2nd
Trading and Distribution SUBINDUSTRY	3/204	2nd

Peers Table

Peers (Market cap \$0.0 - \$0.0bn)

	Exposure	Management	ESG Risk Rating
1. LOXAM SAS	28.0 Low	66.3 Strong	11.3 Low
2. Azelis Group NV	31.6 Low	68.3 Strong	11.9 Low
3. Dubai Aerospace Enterprise (DAE) Ltd.	27.6 Low	60.4 Strong	12.5 Low
4. Amadys Belgium NV	33.8 Low	67.2 Strong	13.2 Low
5. IMCD NV	28.7 Low	56.5 Strong	13.7 Low

Dubai Aerospace Enterprise (DAE) Ltd.

Trading and Distribution United Arab Emirates

ESG Risk Analysis

Exposure refers to the extent to which a company is exposed to different material ESG Issues. The exposure score takes into consideration subindustry and company-specific factors such as its business model.

ESG Risk Exposure

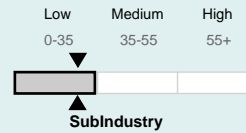
27.6

0.0

Low

Momentum

Beta = 0.99



Dubai Aerospace Enterprise (DAE) states that decarbonization is at the centre of its business strategy. The company also relies on highly qualified employees with skillsets in high demand in other industries, such as banks and aircraft manufacturers. Failure to attract and retain a skilled workforce may expose DAE to high turnover rates, which may affect hiring and training costs. As a lessor, DAE is not directly responsible for the operational risks faced by its lessees; however, any incidents resulting from poor aircraft maintenance could reflect negatively on its reputation, leading to a loss of prospective clients and contracts. Lastly, DAE operates in 59 countries and is exposed to compliance risks, especially in areas where compliance regulations are lax. Failure to comply with regulations in each region can lead to investigations and, potentially, to significant fines.

The company's overall exposure is low and is similar to subindustry average. Human Capital, Business Ethics and Product Governance are notable material ESG issues.

Management refers to how well a company is managing its relevant ESG issues. The management score assesses the robustness of a company's ESG programs, practices, and policies.

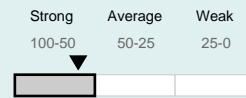
ESG Risk Management

60.4

+7.6

Strong

Momentum



DAE discloses a strong human capital development programme, underpinned by detailed talent recruitment, development and retention initiatives. However, the company could improve its diversity programme, especially considering the critical ongoing debate on DEI integration within the aircraft industry. All DAE's sites where product safety is a material issue are certified to ISO 9001. The company discloses a best practice product and service safety programme, which captures DAE's efforts to ensure that leased aircraft comply with all safety requirements. In addition to quality, DAE's commitment to the Fly Net Zero pledge shows its efforts to offer fuel-efficient aircraft and support its customers' decarbonization paths as well. Lastly, DAE discloses strong bribery and corruption and business ethics programmes, and prohibits political involvement of any kind on the company's behalf.

The company's overall management of material ESG issues is strong.

Dubai Aerospace Enterprise (DAE) Ltd.

Trading and Distribution United Arab Emirates

Material ESG Issues

These are the Material ESG Issues driving the ESG Risk Rating.

Issue Name	ESG Risk Exposure	ESG Risk Management	ESG Risk Rating	Contribution to ESG Risk Rating
	Score Category	Score Category	Score Category	
Human Capital	6.0 Medium	50.5 Strong	3.1 Low	24.9%
Carbon -Own Operations	3.6 Low	54.5 Strong	2.0 Low	16.2%
Corporate Governance	5.0 Medium	61.0 Strong	2.0 Negligible	15.5%
Resource Use -Supply Chain	2.0 Low	31.0 Average	1.5 Negligible	12.0%
Resource Use	2.0 Low	37.6 Average	1.4 Negligible	11.1%
Human Rights -Supply Chain	2.0 Low	50.0 Strong	1.2 Negligible	9.6%
Business Ethics	5.0 Medium	81.3 Strong	1.1 Negligible	9.1%
Product Governance	2.0 Low	100.0 Strong	0.2 Negligible	1.6%
Overall	27.6 Low	60.4 Strong	12.5 Low	100.0%

Events Overview

Identify events that may negatively impact stakeholders, the environment, or the company's operations.

Category (Events)

5 Severe (0)

4 High (0)

3 Significant (0)

2 Moderate (0)

1 Low (0)

Dubai Aerospace Enterprise (DAE) Ltd.

Trading and Distribution United Arab Emirates

Events Overview

Identify events that may negatively impact stakeholders, the environment, or the company's operations.

Category (Events)

⚠ None (17)

Accounting and Taxation

Anti-Competitive Practices

Bribery and Corruption

Business Ethics

Employees - Human Rights - SC

Energy Use and GHG Emissions

Intellectual Property

Labour Relations

Labour Relations - SC

Lobbying and Public Policy

Marketing Practices

Occupational Health and Safety - SC

Quality and Safety

Sanctions

Society - Human Rights - SC

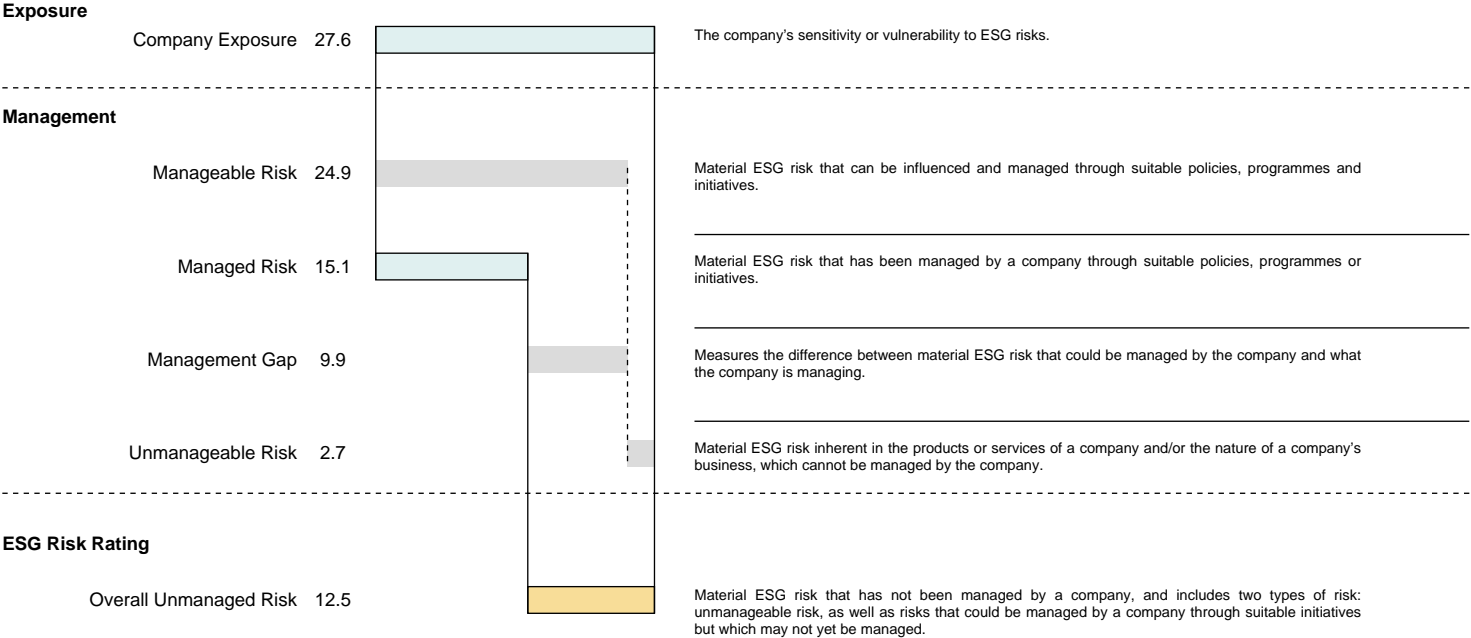
Water Use

Water Use - SC

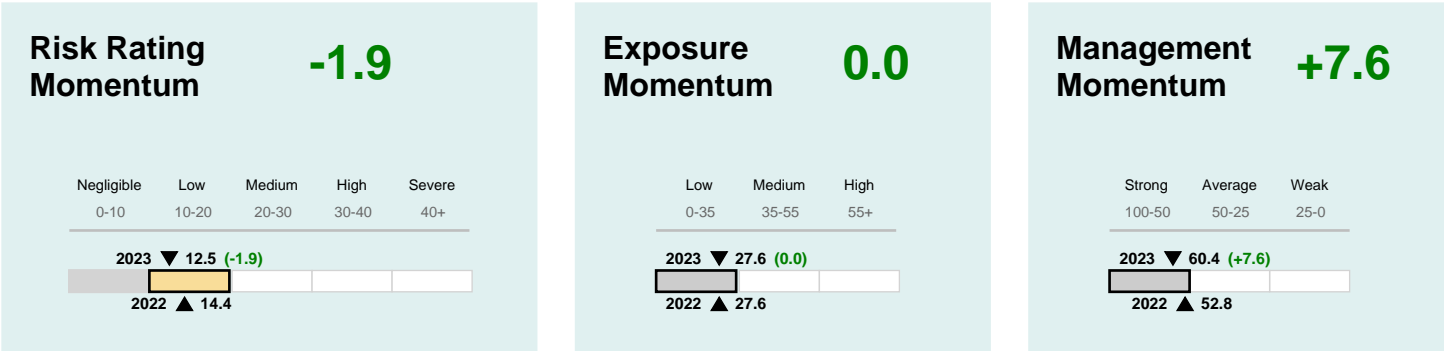
Dubai Aerospace Enterprise (DAE) Ltd.

Trading and Distribution United Arab Emirates

Risk Decomposition



Momentum Details



Dubai Aerospace Enterprise (DAE) Ltd.

Trading and Distribution United Arab Emirates

GLOSSARY OF TERMS

Beta (Beta, β)

A factor that assesses the degree to which a company's exposure deviates from its **subindustry's** exposure on a **material ESG issue**. It is used to derive a company-specific issue exposure score for a material ESG issue. It ranges from 0 to 10, with 0 indicating no exposure, 1 indicating the subindustry average, and 10 indicating exposure that is ten times the subindustry average.

Corporate Governance Pillar

A pillar provides a signal about a company's management of a specific Corporate Governance issue.

ESG Risk Category

Companies' **ESG Risk Rating scores** are assigned to five ESG risk categories in the **ESG Risk Rating**:

-  **Negligible risk:** enterprise value is considered to have a negligible risk of material financial impacts driven by ESG factors
-  **Low risk:** enterprise value is considered to have a low risk of material financial impacts driven by ESG factors
-  **Medium risk:** enterprise value is considered to have a medium risk of material financial impacts driven by ESG factors
-  **High risk:** enterprise value is considered to have a high risk of material financial impacts driven by ESG factors
-  **Severe risk:** enterprise value is considered to have a severe risk of material financial impacts driven by ESG factors

Note that because ESG risks materialize at an unknown time in the future and depend on a variety of unpredictable conditions, no predictions on financial or share price impacts, or on the time horizon of such impacts, are intended or implied by these risk categories.

ESG Risk Rating Score (Unmanaged Risk Score)

The company's final score in the **ESG Risk Rating**; it applies the concept of **risk decomposition** to derive the level of **unmanaged risk** for a company.

Event Category

Sustainalytics categorizes events that have resulted in negative ESG impacts into five event categories: Category 1 (low impact); Category 2 (moderate impact); Category 3 (significant impact); Category 4 (high impact); and Category 5 (severe impact).

Event Indicator

An indicator that provides a signal about a potential failure of management through involvement in controversies.

Excess Exposure

The difference between the company's **exposure** and its **subindustry** exposure.

Exposure

A company or **subindustry's** sensitivity or vulnerability to ESG risks.

Idiosyncratic Issue

An issue that was not deemed material at the **subindustry** level during the **consultation process** but becomes a **material ESG issue** for a company based on the occurrence of a Category 4 or 5 event.

Manageable Risk

Material ESG risk that can be influenced and managed through suitable policies, programmes and initiatives.

Managed Risk

Material ESG Risk that has been managed by a company through suitable policies, programmes and initiatives.

Management

A company's handling of ESG risks.

Management Gap

Refers to the difference between what a company has managed and what a company could possibly manage. It indicates how far the company's performance is from best practice.

Management Indicator

An indicator that provides a signal about a company's management of an ESG issue through policies, programmes or quantitative performance.

Material ESG Issue

A core building block of the **ESG Risk Rating**. An ESG issue is considered to be material within the rating if it is likely to have a significant effect on the enterprise value of a typical company within a given **subindustry**.

Subindustry

Subindustries are defined as part of Sustainalytics' own classification system.

Unmanageable Risk

Material ESG Risk inherent from the intrinsic nature of the products or services of a company and/or the nature of a company's business, which cannot be managed by the company if the company continues to offer the same type of products or services and remains in the same line of business.

Unmanaged Risk

Material ESG risk that has not been managed by a company, and includes two types of risk: **unmanageable risk**, as well as risks that could be managed by a company through suitable initiatives, but which may not yet be managed (**management gap**).

Dubai Aerospace Enterprise (DAE) Ltd.

Trading and Distribution United Arab Emirates

DISCLAIMER

Copyright ©2023 Sustainalytics, a Morningstar company. All rights reserved.

The information, methodologies, data and opinions contained or reflected herein are proprietary of Sustainalytics and/or content providers, intended for internal, non-commercial use and may not be copied, distributed or used in any other way, including via citation, unless otherwise explicitly agreed in writing. They are not directed to, or intended for distribution to or use by India-based clients or users and their distribution to Indian resident individuals or entities is not permitted.

They are provided for informational purposes only and (1) do not constitute an endorsement of any product, project, investment strategy or consideration of any particular environmental, social or governance related issues as part of any investment strategy; (2) do not constitute investment advice, nor represent an expert opinion or negative assurance letter; (3) are not part of any offering and do not constitute an offer or indication to buy or sell securities, to select a project or make any kind of business transactions; (4) are not an assessment of the issuer's economic performance, financial obligations nor of its creditworthiness; (5) are not a substitute for professional advice; (6) past performance is no guarantee of future results; (7) have not been submitted to, nor received approval from, any relevant regulatory bodies.

These are based on information made available by third parties, subject to continuous change and therefore are not warranted as to their merchantability, completeness, accuracy, up-to-datedness or fitness for a particular purpose. The information and data are provided "as is" and reflects Sustainalytics' opinion at the date of its elaboration and publication.

Neither Sustainalytics/Morningstar nor their content providers accept any liability from the use of the information, data or opinions contained herein or for actions of third parties in respect to this information, in any manner whatsoever, except where explicitly required by law.

Any reference to content providers' names is for appropriate acknowledgement of their ownership and does not constitute a sponsorship or endorsement by such owner. A list of our content providers and their respective terms of use is available on our website. For more information visit <http://www.sustainalytics.com/legal-disclaimers>.

Sustainalytics may receive compensation for its ratings, opinions and other deliverables, from, among others, issuers, insurers, guarantors and/or underwriters of debt securities, or investors, via different business units. Sustainalytics believes it has put in place appropriate measures designed to safeguard the objectivity and independence of its opinions. For more information visit [Governance Documents](#) or contact compliance@sustainalytics.com.